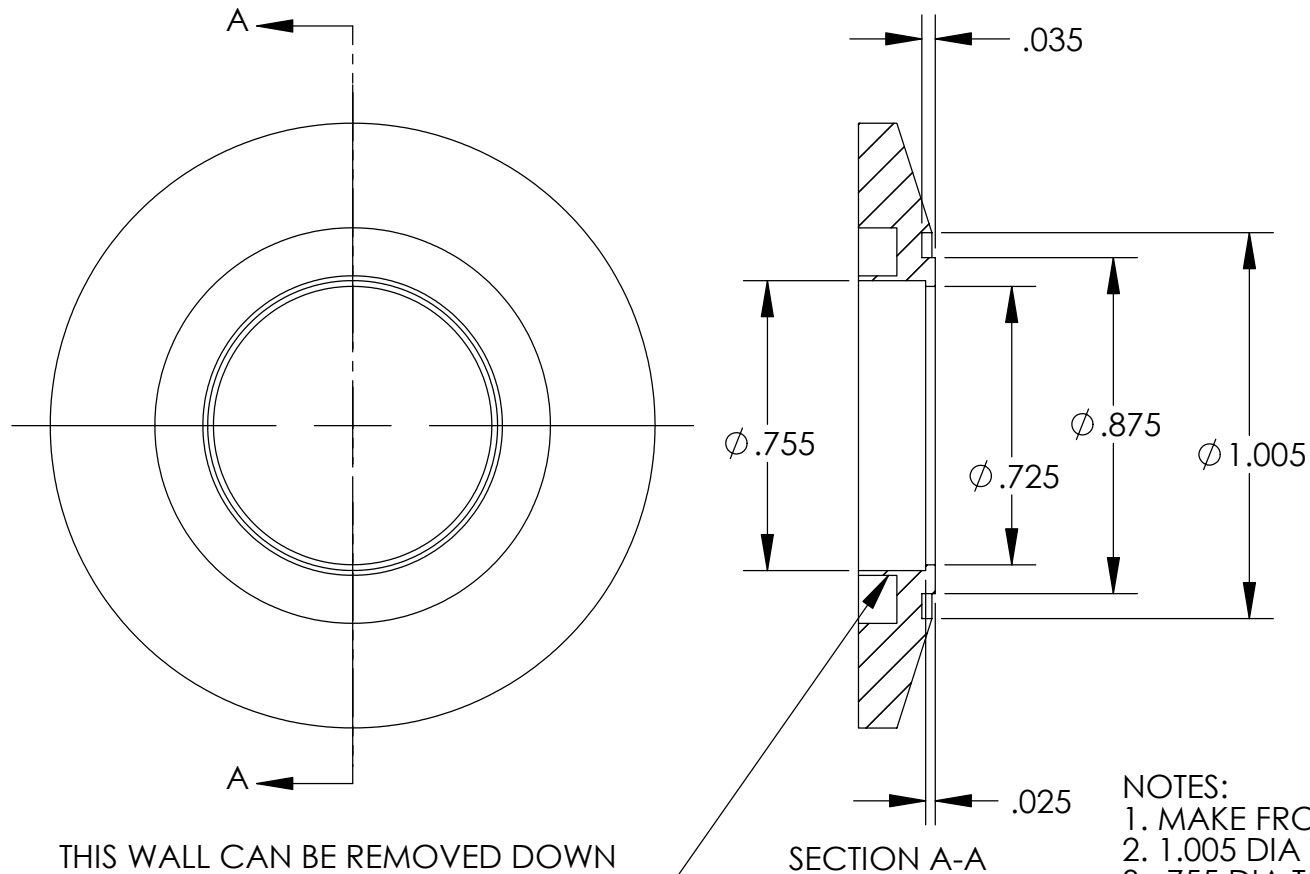


REVISIONS		
REV	DESCRIPTION	DATE



- NOTES:
1. MAKE FROM MDC # 713009.
 2. 1.005 DIA TO FIT WITH P/N -103.
 3. .755 DIA TO FIT WITH P/N -110.

UNLESS OTHERWISE SPECIFIED:

DIMENSIONS ARE IN INCHES
DECIMAL TOLERANCES:
.X ±.030 .XX ±.015 .XXX ±.005

ANGULAR TOL: ± 1° SURFACE ROUGHNESS: 63/√

INTERNAL AND EXTERNAL SURFACE
INTERSECTIONS SHALL BE UNIFORMLY
FINISHED WITH CHAMFER .005/.010 X 45°
OR RADIUS .005/.010.
CHAMFER ALL THREADED HOLES 110° OF
MAJOR DIAMETER X 45°

MATERIAL: -

FINISH: N/A

High Precision Devices

1668 Valtrec Lane, Suite C, Boulder, Colorado 80301
Phone: (303) 447-2558 Fax: (303) 447-2548 Web Site: www.hpd-online.com

TITLE: **p02101-105 flange, NW25**

CONFIGURATION: **0-Default**

SIZE	QTY PER ASSM:	SCALE:	SHEET	OF	REV
A	1	2:1	1	1	A
DATE:	5/20/2004	DRAWN BY:	C. Danaher		